



ASSOCIATED POWER STRUCTURES PRIVATE LIMITED

An ISO 9001 / 14001 / 3834-2:2005/ OHSAS 18001 Certified Company

OUR STORY

Journey Begins

1996
Company Incorporated
at Vadodara, Gujarat,
India

2003
Establishment of first
manufacturing Unit at
MANGLEJ, India

2005
Establishment of
second manufacturing
Unit at BAMANGAM,
India

2009
Entry into EPC
segment of T&D

2011
Entry into Renewable
Segment

2016
Entry into International
Business

And going strong

WHY APS?

EPC upto 800kV

3339 CKM

Pile Foundations

202

Substation Projects

5

Telecom Towers supplied

85,000 MT

Lattice T&D Towers Supplied

755,000 MT

Windmill Towers Supplied

196,000 MT

International Presence

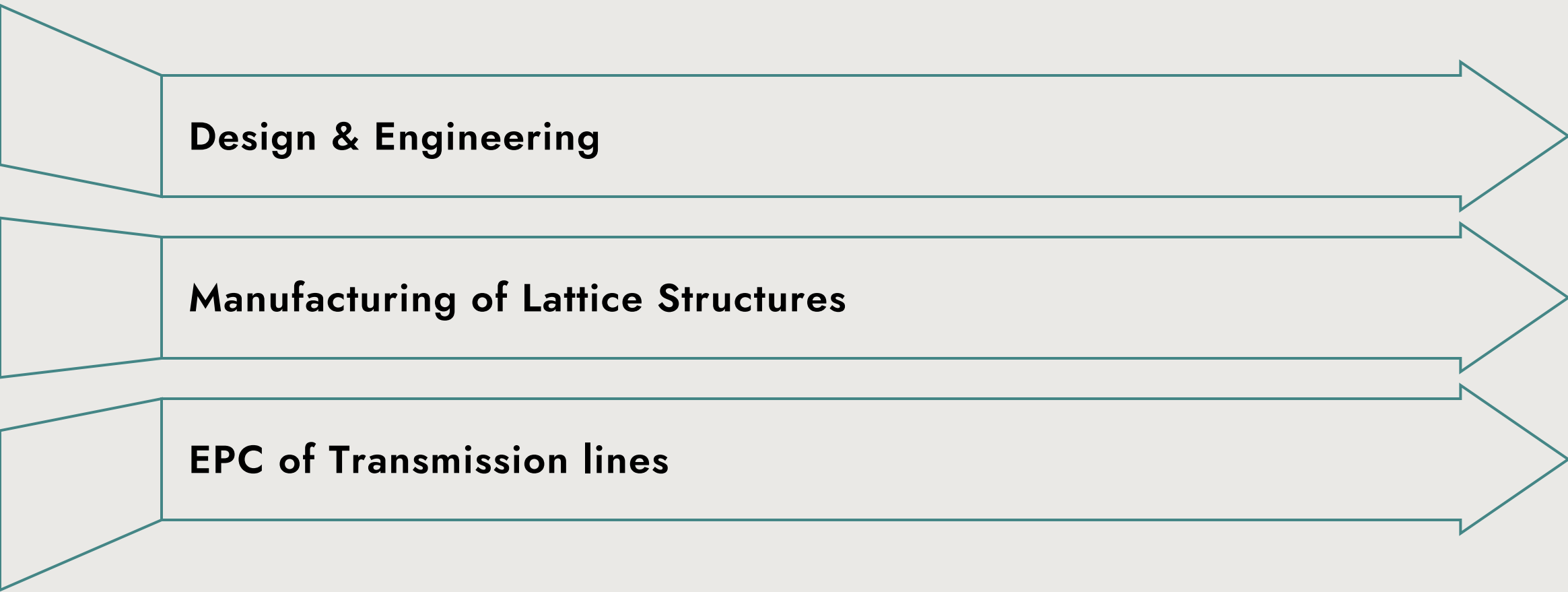
16

Total Workforce

450

WHAT WE OFFER?

We provide exemplary services in the following



Design & Engineering

Manufacturing of Lattice Structures

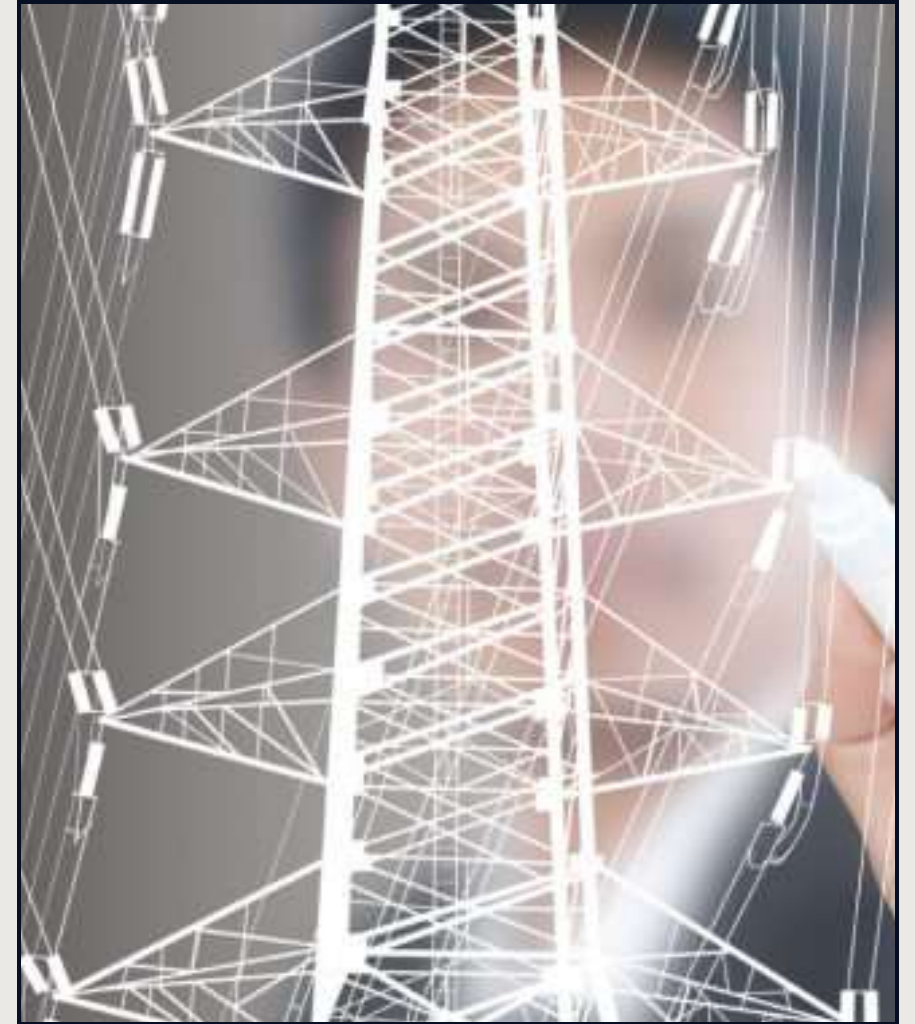
EPC of Transmission lines

WHAT WE OFFER?

Design & Engineering

Manufacturing of Lattice Structures

EPC of Transmission lines



DESIGN & ENGINEERING

- 10+ years of designing and developing transmission projects
- Fully in-house and highly experienced team of more than 10 engineers and 20 draftsmen
- Experience and expertise in use of the latest software including
 - PLS-Tower
 - PLS CADD
 - STADD Pro
 - AUTOCAD
 - BOCAD
- Exclusive tie-up with tower testing station for complete load testing upto destruction





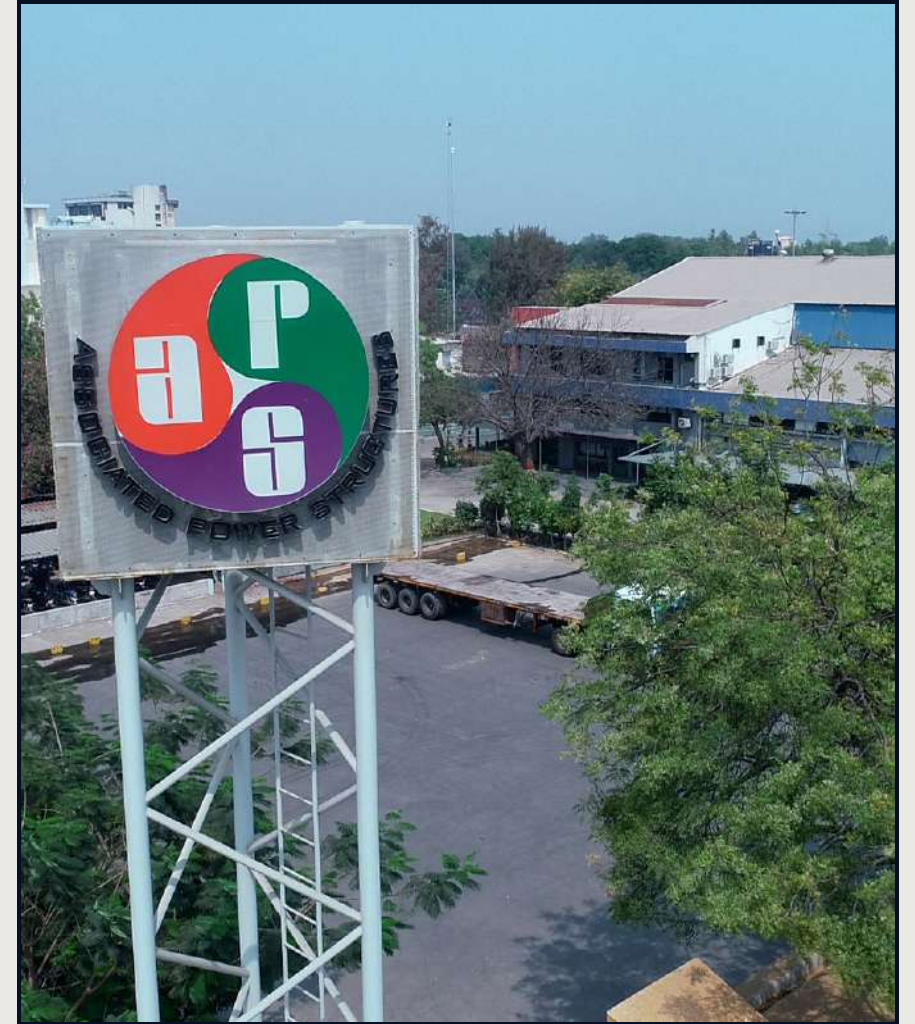
***SUCCESSFULLY DESIGNED AND
TYPE TESTED 500 KV DC QUAD
TOWERS WITH A HEIGHT OF 110.35
METER (99.22 MT) AND 104.35
METER (118 MT).***

WHAT WE OFFER?

Design & Engineering

Manufacturing of Lattice Structures

EPC of Transmission lines



OUR MANUFACTURING FACILITIES

Annual Production capacity of 96,000 MT



Bamangam Plant

- 72,000 MT annual Capacity
- Fully Automated with Messer Plasma, Ficep & Alps machinery
- 12.2m X1.2m X 2m In-house galvanizing bath
- Environment friendly with 2000 trees

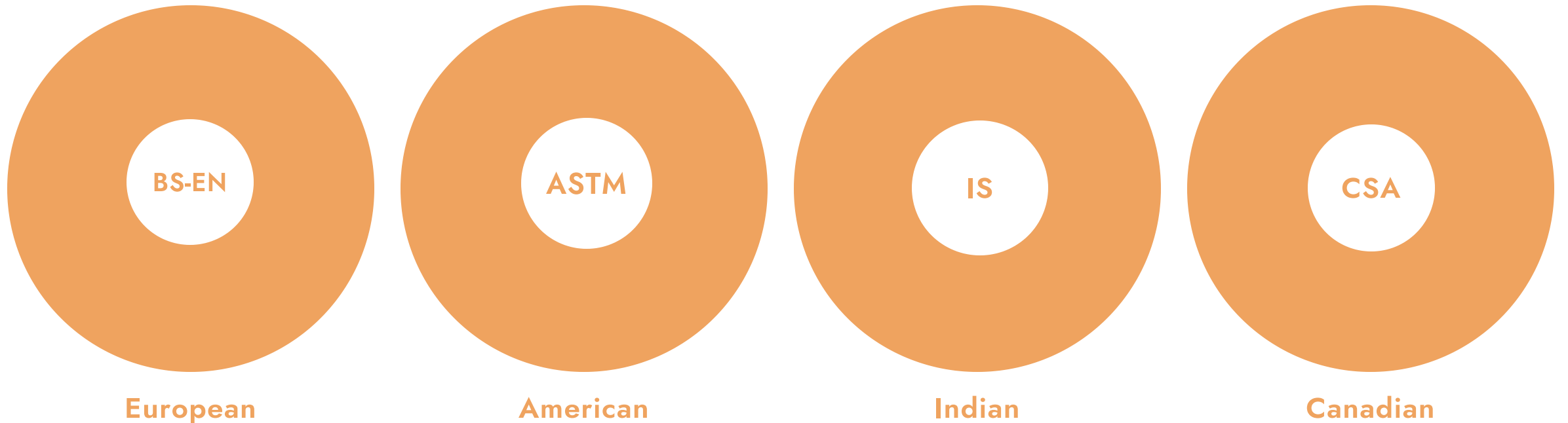


Manglej Plant

- 24,000 MT annual capacity
- Fully Automated with Messer Plasma & Ficep machinery
- Environment friendly with 1000 trees

RAW MATERIAL PROCUREMENT

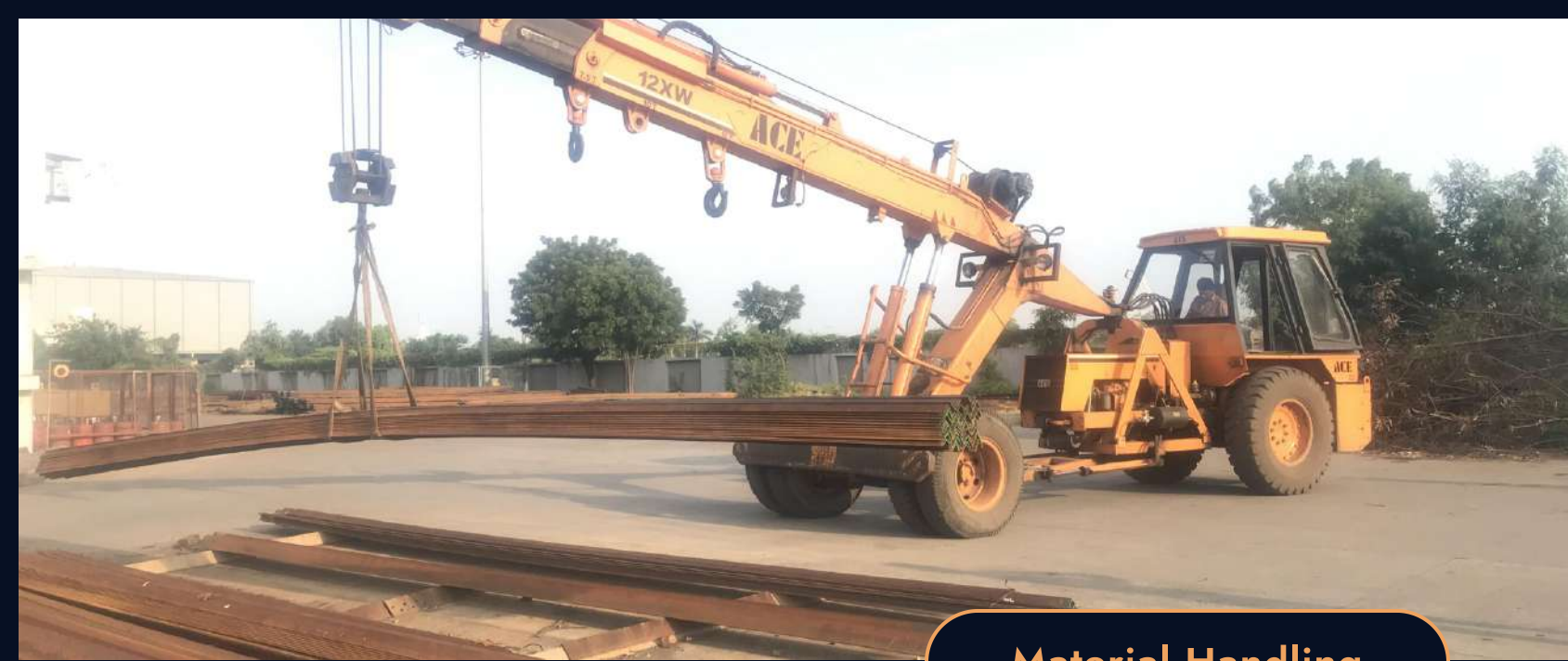
We source raw material from NABL & CE approved steel rolling facilities in India





Raw material Unloading & Storage





Material Handling





Manufacturing - CNC Automation

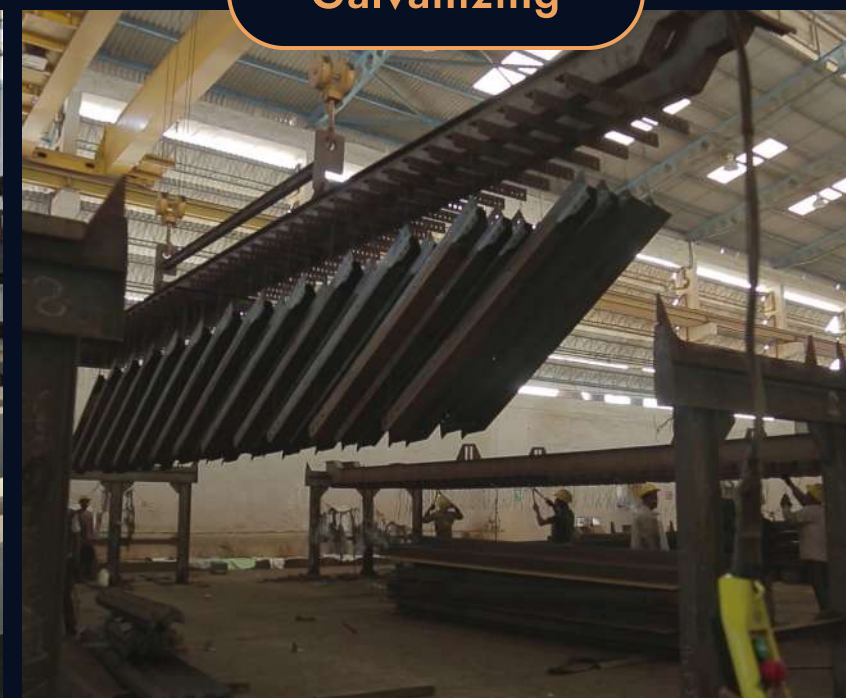


MACHINES





Galvanizing





Tower-wise Bundling



OUR PRODUCTS MEET THE GLOBAL INDUSTRY STANDARDS



Quality



Environment



Safety & Health



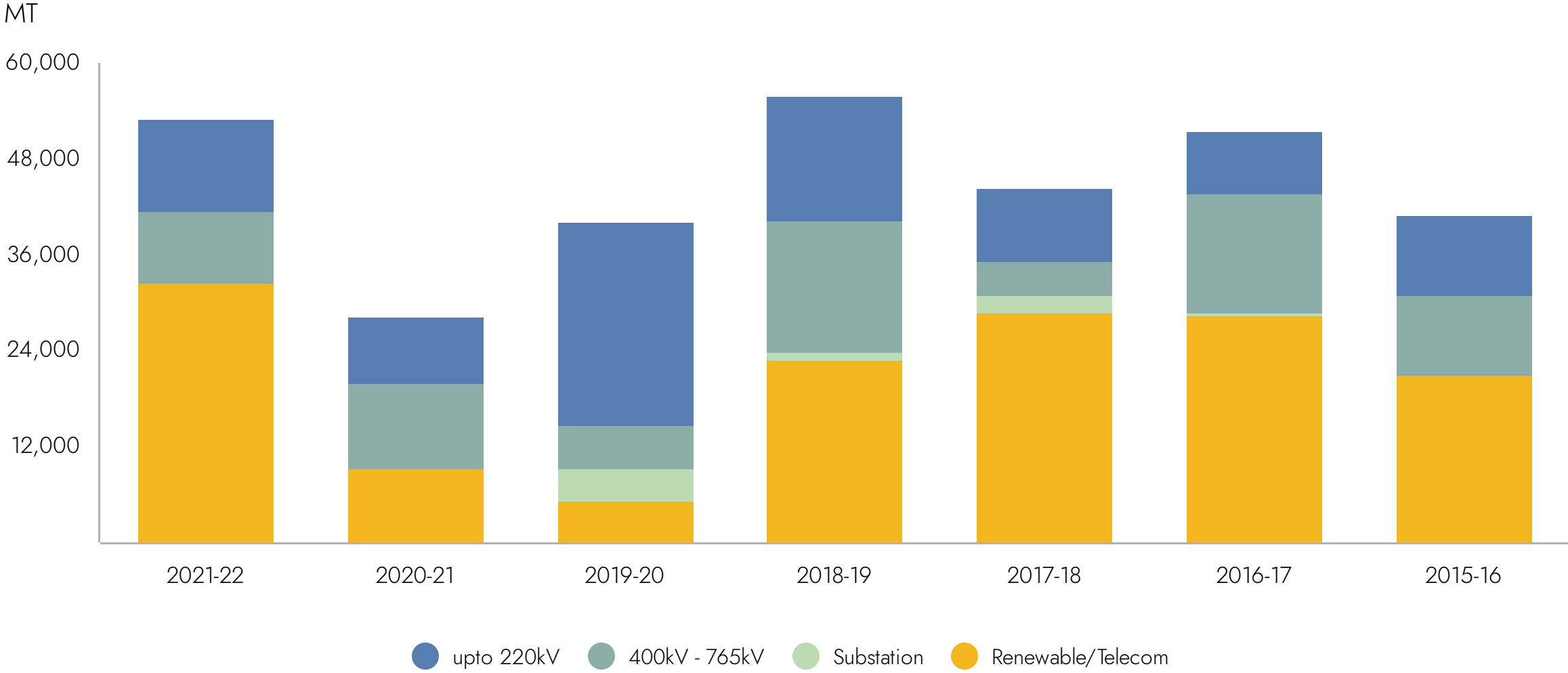
Conformity with EU Standard



In-House Testing Facility



PRODUCTION HISTORY - LAST 7 YEARS



MAJOR SUPPLY PROJECTS

	Name of the Project	Client/Country	Qty (MT)
1	400 kV D/C Twin Agra(UP)-Agra(South) line	PGCIL, India	6,049
2	Supply of towers between Agra-Lucknow Expressway	PGCIL, India	5,297
3	400kV D/C Baharampur (India) – Bheramara (Bangladesh) TL	PGCIL, India	4,584
4	Supply of 66kV DC, 132kV D/C & 220KV D/C Towers	GETCO, India	10,297
5	Supply of towers to 500kV Mariveles – Balsik (Hermosa) TL	NGCP- Philippines	9,507
6	Supply of towers for various types of 110 KV and 230 KV TLs	TANTRANS CO, India	19,600
7	Supply of 400kV, 230kV and 132kV TLs Towers	PGCB - Bangladesh	14,165
8	EPC of 66kV TL between Idiofa, PK-600 and Kikwit	DR Congo	1,250
9	Supply of 66 KV Class D/C & M/C G.I. Tower materials	GETCO, India	8,262

WHAT WE OFFER?

Design & Engineering

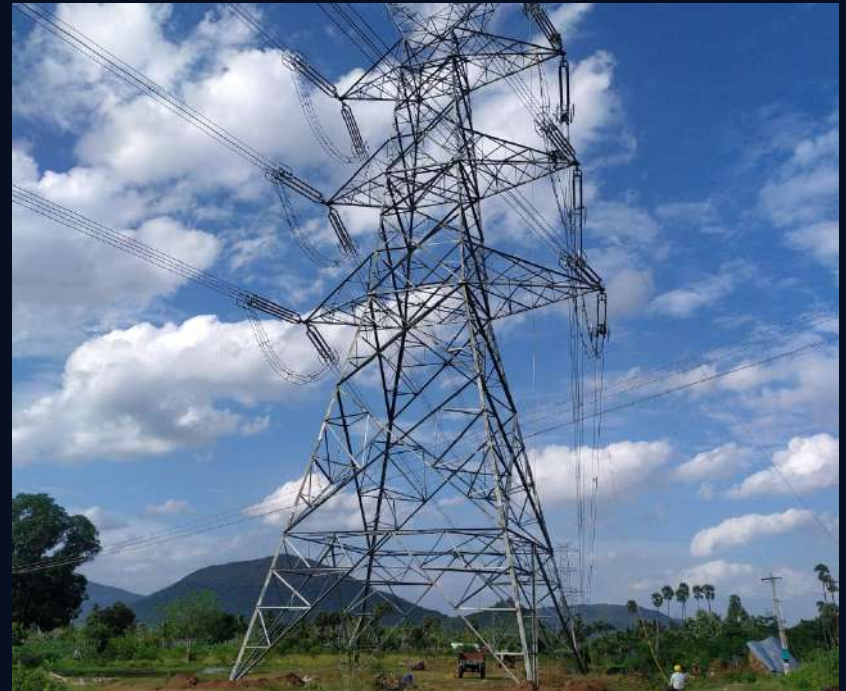
Manufacturing of Lattice Structures

EPC of Transmission lines



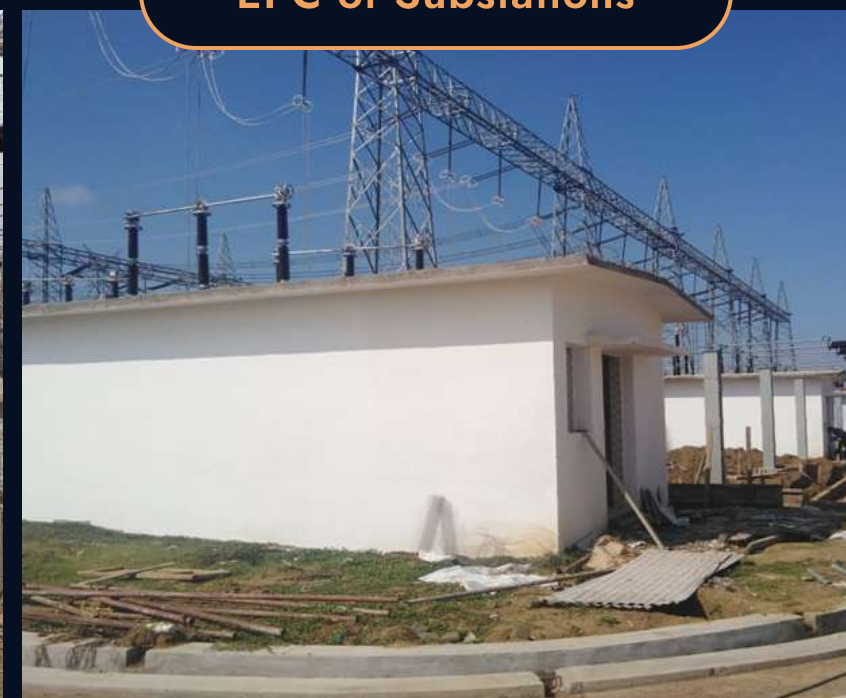


EPC of Transmission Lines





EPC of Substations



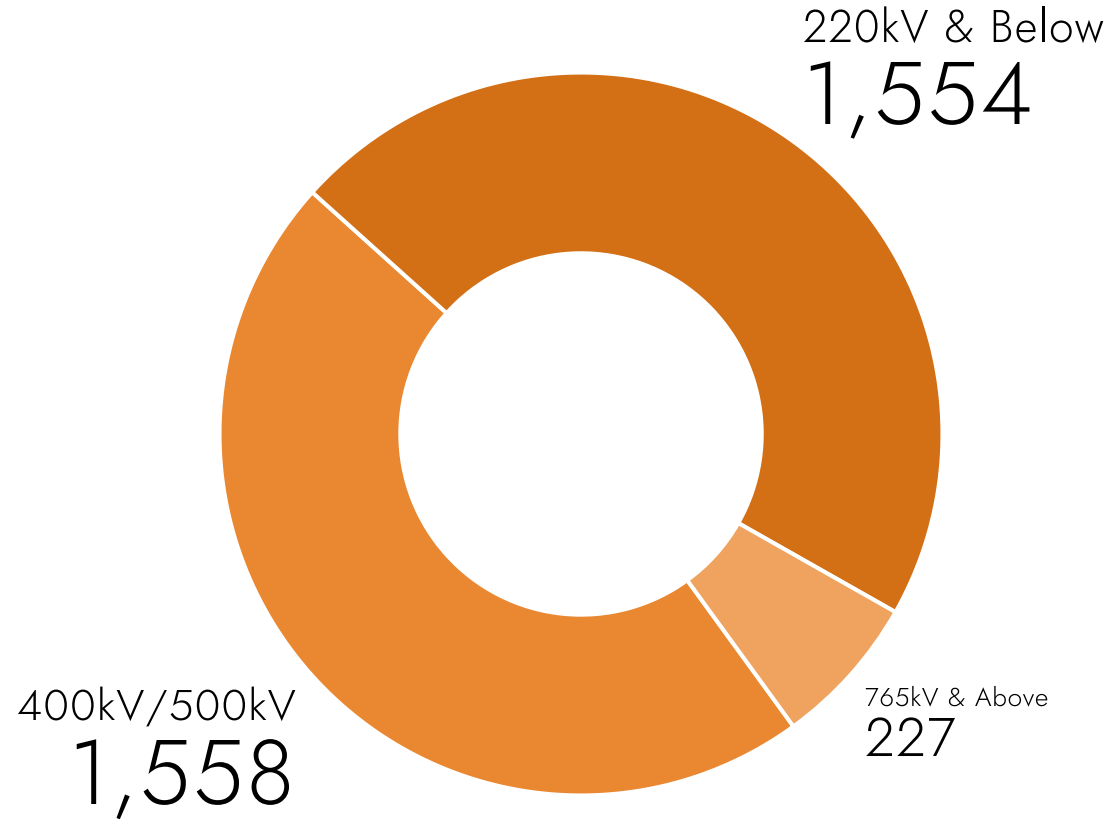


Piling



CONSTRUCTION RECORD

Transmission Lines in CKM.



Substations in Nos.



EPC PROJECTS

Name of the Project		Client (INDIA)	KMs.
1	765KV D/C Hexa Zebra Lakadiya–Vadodara Tr. Line.	SPVGL	71.1
2	400kV D/C Twin Moose Baharampur (India) – Bheramara (Bangladesh) Tr. Line with Baharampur (India) 400 kV S/S Bay Extension for Indian Portion.	PGCIL	87.426
3	Diversion of 800 kV HVDC, 765kV S/C, D/C & 400kV S/C, D/C , Various Tr. Lines.	PGCIL	51.28
4	Diversion of 800kV HVDC, 765kV S/C, D/C 400kV S/C, D/C & 220kV Various Tr. Lines for construction of Agra–Lucknow Expressway by UPEIDA.	PGCIL	80.577
5	400 KV D/C Twin Moose Unchahar–Fatehpur Tr. Line Associated with Tr. System for ATS of Unchahar TPS UnderTarif Based Competitive Bidding route.	PGUTL	53.372
6	400KV D/C Wanakbori to AP–45 with Twin AL–59 Conductor on turnkey basis.	GETCO	60.88
7	LILO of S/C 400kV D/C Twin Ukai – Kosamba Tr. lines at 400KV Vav S/S on Turnkey Basis.	GETCO	31
8	LILO of S/C 400kV D/C Jhanor – Navsari Tr. line at 400KV Vav S/S on Turnkey Basis.	GETCO	10
9	LILO of S/C 220KV D/C Nyara –Tebhda Tr. line at 220KV Moti Gop S/S on Turnkey Basis.	GETCO	14.84
10	400Kv D/c (Quad) Madhugiri–Yehlanka Tr. Line.	PGCIL	64.00
11	400 KV D/C Quad Moose ACSR Rewa Road – Meja.	ISOLUX	34.246
12	LILO of One Circuit of 400 Kv Double Circuit Aligarh–Sikandrabad Twin Moose Tr. At Harduaganj Extension–li Tps.	UPPTCL	30.28
13	Pkg–TW04 400kV D/C Quad Pugalur HVDC Station–Thiruvalem Tr. line (Part – II).	PGCIL / EMC	219.658

EPC PROJECTS

	Name of the Project	Client (INDIA)	KMs.
14	Construction of 220kV and 132kV Sub-stations and Transmission Lines in Shajapur and Sheopur Dist.	MPPTCL	220 / 132kV S/s Work
15	Seoni-Nainpur 132kV DCDS transmission line.	MPPTCL	84.026
16	220 KV D/C Kosamba-Mobha Tr. Line on Turnkey Basis.	GETCO	89.76
17	220 KV S/C Savarkundla -Vartej LILO at BECL Tr. Line on Turnkey Basis.	GETCO	28.55
18	220 KV D/C BECL Sagapara Tr. Line on Turnkey Basis.	GETCO	41.663
19	LILO of S/C of 220kV DC Kosamba-Mobha Tr.Line at Suva S/S.	GETCO	57.294
20	400KV D/C Twin Agra - Agra Tr. Line near Kuberpur.	PGCIL	12.828
21	Diversion of LILO of 400kv D/C Quad Khalgaon-Patna Tr.Line.	PGCIL	5.411
22	400Kv S/C Twin Kanpur-Agra Transmission Line .	PGCIL	2.82
23	220 KV D/C Visavadar-Timbdi Tr. Line with AL-59 Conductor on turnkey basis.	GETCO	90.054
24	220KV Varsana - Mokha Tr. Line with AL-59 Conductor on Turnkey Basis.	GETCO	9.26
25	220kV D/C Tappar-Nani khakhar Tr. Line at Mokha S/S with ACSR Zebra Conductor On Turnkey Basis.	GETCO	10.798
26	220 KV D/C Jamnagar - Hadala Tr. Line with AL-59 Equivalent Weight of ACSR Zebra conductor On Turnkey Basis.	GETCO	69.57

EPC PROJECTS

	Name of the Project	Client (INDIA)	KMs.
27	LILO of D/C of 400 KV D/C Vadinar–Hadala line at 400KV Kalawad with ACSR Twin Moose conductor on turnkey basis.	GETCO	7.7
28	New 132kV S/C Tr. Line on D/C Tower from Motihari (400/132Kv) GSS to Upcoming Pakridayal GSS, 220/132kv Motipur GSS to Upcoming Chakiya GSS & LILO OF 132kV S/C of Jainagar–Phulparas Tr. Line at Jhanjharpur.	BSPTCL	69.078
29	220 KV D/C Tr. line from BTPS Extension Project to 220/132 KV GSS.	BSPTCL	107.69
30	132 KV D/C Haldarwa – Trasla DFCC line with ACSR Panther conductor On Turnkey Basis.	GETCO	11.55
31	LILO of one circuit of 400kV D/C Kosamba – Chorania Tr. lines at 400KV Pachchham S/S .	GETCO	23
32	220 kV D/C Saharsa (New) – Begusarai T/L.	BSPTCL	100
33	220 kV D/C Saharsa (New)– Khagaria (New) T/L.	BSPTCL	80
34	220KV D/C Amreli – Babara line – line.	GETCO	26.25
35	220 kV D/C Navsari (PG) – Bhestan Tr. Line.	PGCIL	18.52
36	220KV D/C Shapar – Babara Tr. Line.	GETCO	70.2
37	132 KV D/C Ode – Manjusar line with ACSR Panther Conductor On Turnkey Basis.	GETCO	27.678

International Projects

	Name of the Project	Country	Kms.
1	Supply and Delivery of Transmission Line Tower to JV of NPD Ltd. & Patronics– Rwanda	Rwanda	-
2	Supply and Delivery of Transmission Line Tower Kenya Power & Lighting Ltd., Kenya via Larsen & Toubro Ltd	Kenya	-
3	Supply and Delivery of Transmission Line Tower North West power Generation Company Ltd., Bangladesh via Larsen & Tourbo Ltd.	Bangladesh	-
4	Supply and Delivery of 500 kV EHV Transmission Line Tower for the Mariveles – Balsik (Hermosa) Project – Schedule I (Steel Towers)	Philippines	-
5	Pkg–3A: Civil Works and Other Services for the construction of Various 132 kV Transmission Line	Srilanka	42.5

OUR GLOBAL PRESENCE - 16 COUNTRIES & COUNTING



OUR CUSTOMERS JUST LOVE US

“ APS, HAS SATISFACTORILY COMPLETED THE SUPPLY AND DELIVERY OF THE TRANSMISSION TOWERS IN ACCORDANCE TO THE PROVISIONS AND CONDITIONS OF THE PURCHASE ORDER AND THAT WE HAVE ACCEPTED THE PRODUCT AND ARE VERY HAPPY WITH THE QUALITY AND PERFORMANCE. ”

NGCP, Philippines.



“ ...THIS IS TO CERTIFY THAT THE WORKS HAVE BEEN COMPLETED AND COMMISSIONED WITHIN TARGETED SCHEDULE WITH UTMOST SATISFACTION. WE APPRECIATE THEIR EFFORT FOR TIMELY COMPLETION OF THE PROJECT.. ”

PGCIL, India



“ ... WE ARE PLEASED TO CERTIFY THAT APS HAVE SUCCESSFULLY COMPLETED THE SUPPLY OF TOWERS FOR THE PROJECT WITH SATISFACTORY FABRICATION & GALVANIZING QUALITIES AS ON DATE. ”

NPD, Rwanda





We Care for the Society & the Environment



THANK YOU

Vadodara, India



www.apspvt.com



info@apspvt.com



+91 9727767090

